

Osseodensification

Versah® C-Guide™ System Protocol



Guided Surgery Protocol

Overview: The Versah® C-Guide® Guided surgery is an innovative system that allows for adequate irrigation, proper visualization of the osteotomy expansion/preparation, freedom to luxate the Densah Bur® and the ability to manage multiple sites with different preparation depths and diameter with precision.

Preparation

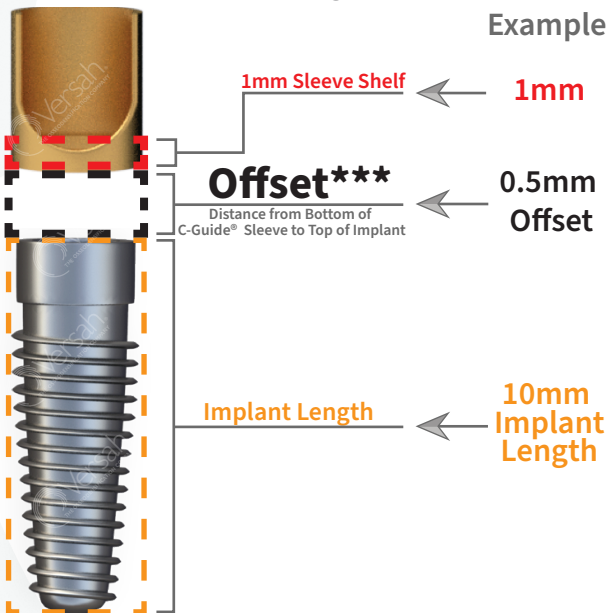
Step 1

Imaging: Obtain a CBCT scan and clinical impressions of patients designated jaw(s) (upper or lower).

Step 2

Treatment Planning: Contact Versah certified dental lab. Send the lab the CBCT scan and clinical impressions. For a list of all Versah certified labs please visit Versah website: www.versah.co.uk/versah-guided-surgery-system.

Step 3 **Schedule case planning session with your lab** to decide the final implant diameter/angulation as well as the drilling sequence with burs needed according to the following formula.



Final G-Stop® Depth must be calculated and communicated to the Doctor Using the Formula:

Formula	Example
Implant Length	10mm
Offset Distance	0.5mm
+ C-Guide®	+ 1mm
G-Stop® Length	11.5mm



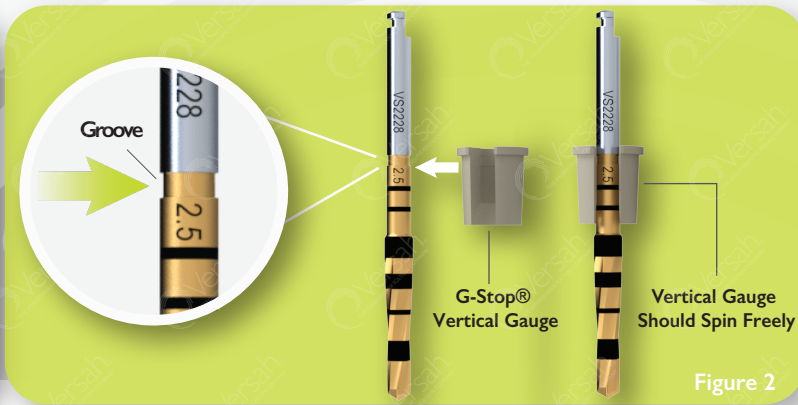
* Doctor to order G-Stop® (keys & gauges) directly from Versah.

** Lab to order the C-Guide® sleeves to install in surgical guide.

*** Adjust the Offset 1-3mm to Create an Exact Match with a G-Stop® Drilling Depth.

Clinical

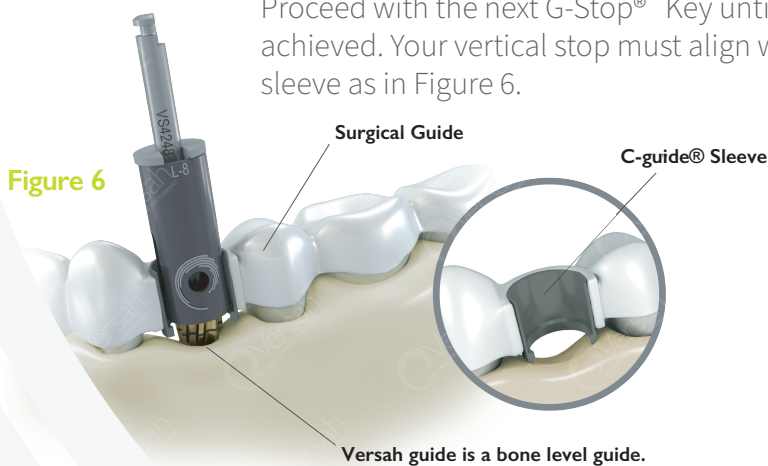
- Step 4** Select the appropriate G-Stop® assembly (Which is the G-Stop® vertical gauge + G-Stop® Key as in Figure 1) for the burs to be used in the surgery. Next, snap the vertical gauge into the Densah® Bur designated groove on its shank as in Figure 2. The vertical gauge should spin freely as in Figure 3.



- Step 5**
- Use G-Stop® (5mm) to mark your osteotomy and Establish initial trajectory as in Figure 4.
 - Exchange the 5mm G-Stop® with the designated final depth G-Stop® to drill to the final osteotomy depth as in Figure 5.

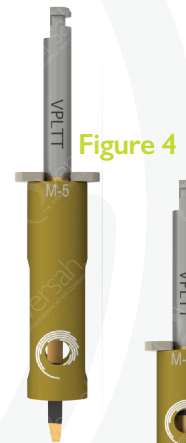
You may repeat the above staged depth drilling sequence with the Densah® Bur as needed.

- Step 6** Start with subsequent Densah® Bur in your drilling protocol. Attach the 5mm G-Stop® Key and drill to depth. Proceed with the next G-Stop® Key until desired depth is achieved. Your vertical stop must align with your C-Guide® sleeve as in Figure 6.

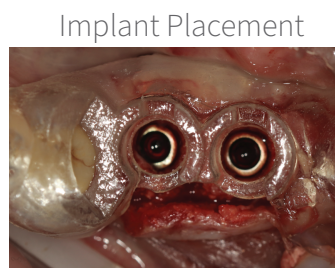
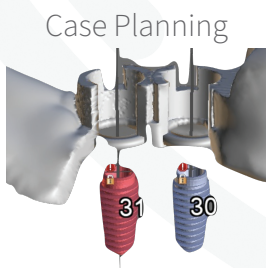


Reference

Using the 5mm G-Stop® Vertical Stop Drill to Depth



Scan this QR code to view our animation video.



*Case Provided by Issac Tawil

Clinician experience and judgment should be used in conjunction with this suggested use protocol.

©2020 Huwais IP Holdings LLC. All rights reserved. Versah® and Densah® are registered trademarks of Huwais IP Holdings LLC. 10017, REV 00

www.versah.com