

# Osseodensification

Versah® C-Guide® System Protocol



**Versah®**  
Guided Surgery Protocol

**Overview:** Versah® Guided surgery is an innovative system that allows for adequate irrigation, proper visualization of the osteotomy expansion/preparation, freedom to luxate the Densah® Bur and the ability to manage multiple sites with different preparation depths and diameters with precision.



### Step 1:

**Imaging:** Obtain a CBCT scan and clinical impressions of patients designated jaw(s).

### Step 2:

**Treatment Planning:** Contact Versah® certified dental lab. Send the lab the CBCT scan and clinical impressions. For a list of all Versah certified labs please visit: [versah.com/guided-surgery-system/](http://versah.com/guided-surgery-system/)

### Step 3:

**Schedule case planning session with your lab** to decide the final implant diameter, angulation, C-Guide® Sleeve placement, and drilling sequence with the needed Densah® Burs.

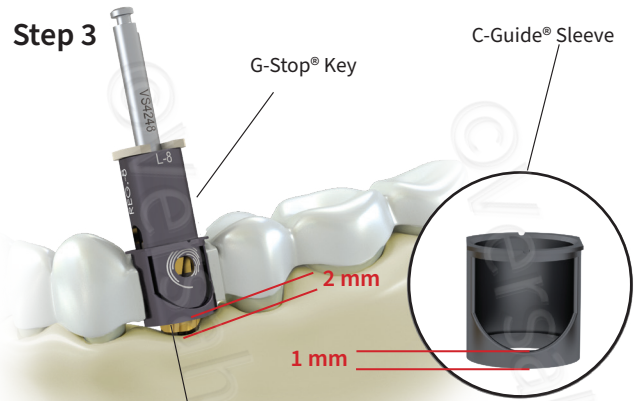
### Step 4:

**Select the appropriate G-Stop® assembly.**

Snap the vertical gauge onto the Densah® Bur designated groove. The gauge should spin freely. (figure 1, 2, 3)

Example:

Large (L) G-Stop® Vertical Gauge, (L) G-Stop® Key, (L) C-Guide® Sleeve



Versah® guide is a bone level guide

**Maximum distance between the C-Guide® Sleeve and crestal bone level is 2 mm<sup>1</sup> plus 1 mm C-Guide® Sleeve shoulder = 3 mm offset**



Figure 1

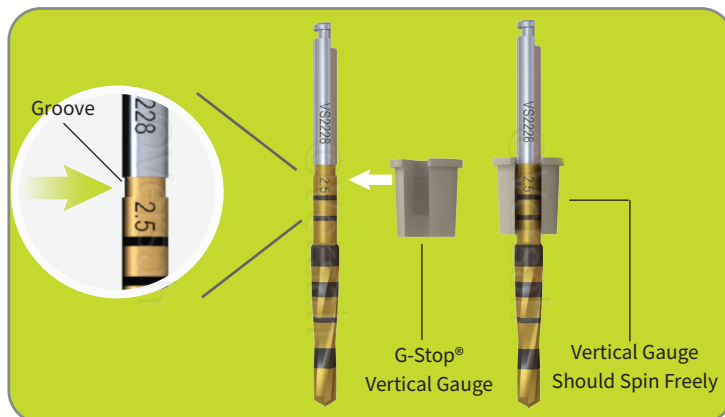


Figure 2



Figure 3

1. Guentsch, A., An, H., & Dentino, A. R. (2022). Precision and trueness of computer-assisted implant placement using static surgical guides with open and closed sleeves: An in vitro analysis. *Clinical Oral Implants Research*, 00, 1–10. <https://doi.org/10.1111/clr.13904>

**Step 5:**

Follow the suggested **Densah® Bur Implant System Drilling Protocol**. Use the **G-Stop® Keys** in incremental steps, e.g., when the distance between sleeve and bone is 2 mm (see Step 3) start with the G-Stop® Key (5 mm) to mark your osteotomy and establish initial trajectory - Exchange (5 mm) for the (10 mm), repeat in regular intervals leading up to your final length, repeat with each Densah® Bur. Your G-Stop® Key must align with your C-Guide®.



Figure 4 (Surgical Keys)

Example (Final length desired 13 mm):

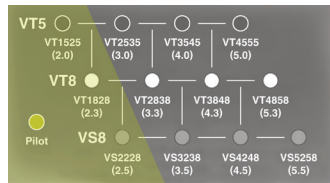
- Tapered Pilot Drill with (5 mm key then 10 mm, 13 mm)
- VT1525 with (5 mm key then 10 mm, 13 mm)
- VT2535 with (5 mm key then 10 mm, 13 mm)

**Sizing the Versah® Guided Surgery System**

**Available Sizes**

**S**  
Placement up to 3.25 mm Implant

**Densah® Bur Compatibility**

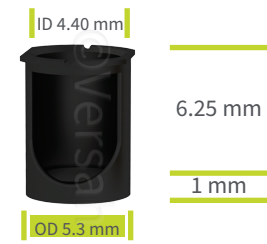


**G-Stop® Vertical Gauge + Key**

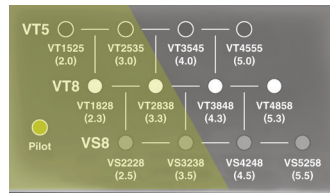


OD 4.2 mm

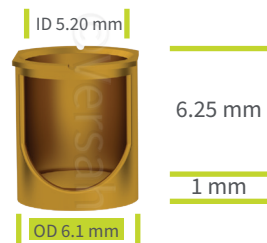
**C-Guide® Sleeve**



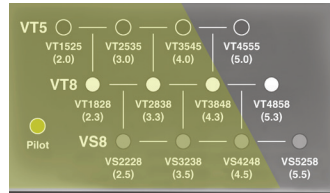
**M**  
Placement up to 4.3 mm Implant



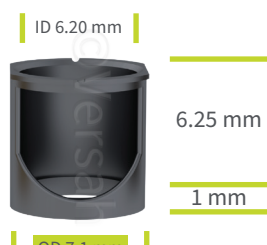
OD 5 mm



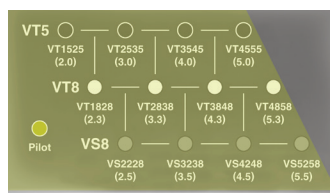
**L**  
Placement up to 5.3 mm Implant



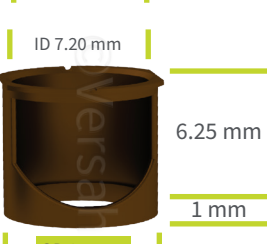
OD 6 mm



**XL**  
Placement up to 6.2 mm Implant



OD 7 mm



Scan for more information



\* Data on file, visit [versah.com/our-science/](http://versah.com/our-science/) for Guided Surgery studies